

AURORA® MODEL 491 PUMPS

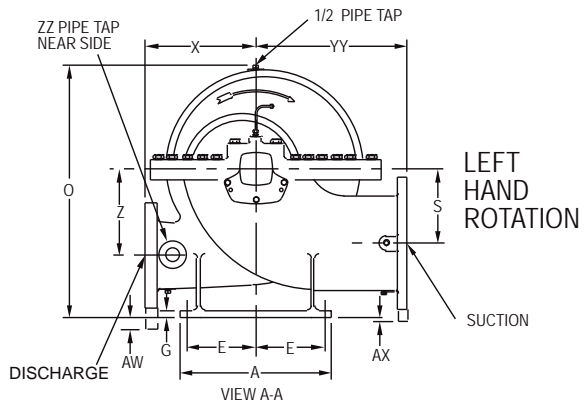
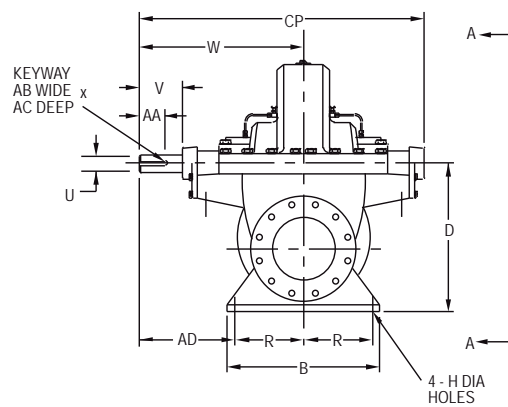
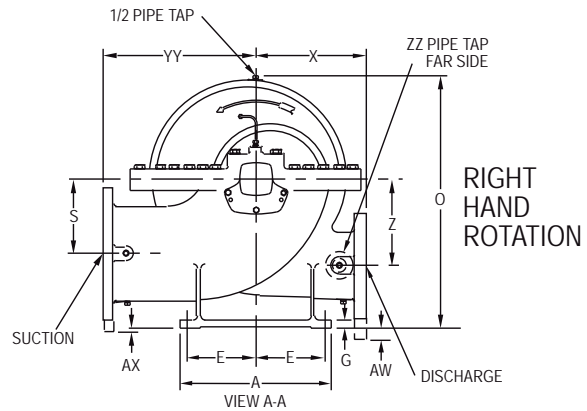
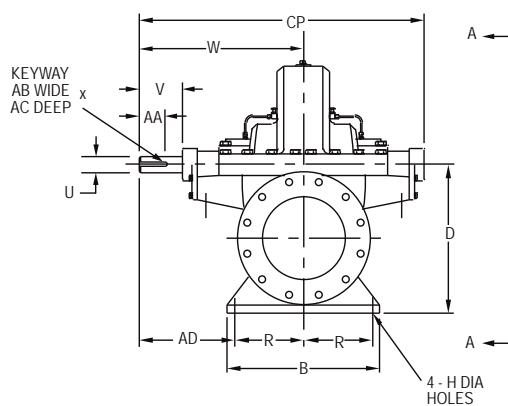
SINGLE-STAGE FIRE SERVICE

Section **912** Page **211**

Date **AUGUST 2014**

Supersedes Section 912 Page 211

Dated JUNE 2014



PUMP SIZE			SUCTION	DIMENSIONS (INCHES)																						
DISCH	MODEL	CASE BORE		A	B	D	E	G	H	O	R	S	U	V	W	X	Z	AA	AB	AC	AD	AW	AX	CP	YY	ZZ
3	491	9A&C	5	14-1/2 (368)	14-1/2 (368)	12 (304)	6-1/4 (159)	1 (25)	7/8 (22)	18-7/8 (479)	6-1/4 (159)	6-1/8 (156)	1-1/8 (28)	3-5/16 (84)	14-5/8 (371)	11 (279)	6-1/8 (155)	2-1/2 (63)	1/4 (6)	1/8 (3)	8-3/8 (212)	-	-	25-15/16 (658)	12 (304)	
4	491	8A	6	11 (279)	11 (279)	9-3/4 (245)	4-5/8 (117)	3/4 (25)	5/8 (16)	16-1/8 (410)	4-5/8 (117)	5-3/4 (146)	1-1/8 (28)	8 (83)	14-5/8 (371)	10 (254)	5-1/2 (140)	2-1/2 (63)	1/4 (6)	1/8 (3)	10 (254)	3/4 (19)	2-1/4 (57)	25-15/16 (658)	11-1/4 (285)	
4	491	11A&C	6	14-1/2 (368)	14-1/2 (368)	13-3/4 (349)	6-1/4 (159)	1 (25)	7/8 (22)	22 (559)	6-1/4 (159)	6-7/8 (174)	1-1/2 (38)	3-1/2 (88)	16-5/8 (422)	11-1/4 (285)	7-1/8 (180)	2-3/8 (60)	3/8 (9)	3/16 (4)	10-3/8 (263)	-	-	29-11/16 (754)	14 (355)	3/4
4	491	14C	6	18 (457)	18 (457)	13-3/4 (349)	8 (203)	1-1/8 (28)	7/8 (22)	23-5/8 (600)	8 (203)	6-7/8 (174)	1-1/2 (38)	3-1/2 (88)	17-5/8 (447)	13 (330)	8-3/8 (212)	2-3/8 (60)	3/8 (9)	3/16 (4)	9-5/8 (244)	-	-	31-11/16 (804)	15-1/4 (387)	
5	491	14A	8	18 (457)	18 (457)	16-1/4 (412)	8 (203)	1-1/8 (28)	7/8 (22)	27-1/16 (687)	8 (203)	8-1/4 (209)	1-1/2 (38)	3-1/2 (88)	17-5/8 (447)	13-1/2 (342)	9-3/4 (247)	2-3/8 (60)	3/8 (9)	3/16 (4)	9-5/8 (244)	-	-	31-11/16 (804)	17-1/4 (438)	
5	491	18A	8	18 (457)	18 (457)	16-1/4 (412)	8 (203)	1-1/8 (28)	7/8 (22)	28-3/8 (720)	8 (203)	8-1/8 (206)	2-1/8 (53)	4-3/8 (111)	18-7/8 (479)	15 (381)	10-5/8 (268)	3-1/2 (88)	1/2 (12)	1/4 (6)	10-7/8 (276)	-	-	33-3/8 (847)	18-3/4 (476)	
6	491	12A	6	14-1/2 (368)	14-1/2 (368)	13-3/4 (349)	6-1/4 (159)	1 (25)	7/8 (22)	22 (559)	6-1/4 (159)	6-7/8 (174)	1-1/2 (38)	3-1/2 (88)	16-5/8 (422)	20-1/2 (520)	7-1/8 (180)	2-3/8 (60)	3/8 (9)	3/16 (4)	10-3/8 (263)	-	-	29-11/16 (754)	14 (355)	
6	491	14A&C	10	18 (457)	18 (457)	18-3/4 (476)	8 (203)	1-1/8 (28)	7/8 (22)	30-1/16 (763)	8 (203)	9-3/8 (238)	2-1/8 (53)	4-3/8 (111)	20-1/8 (511)	13-1/4 (337)	10 (254)	3-1/2 (88)	1/2 (12)	1/4 (6)	12-1/8 (308)	-	-	35-7/8 (911)	18 (457)	
6	491	18C	10	22 (558)	22 (558)	18-3/4 (476)	10 (254)	1-1/8 (28)	7/8 (22)	32 (813)	10 (254)	9-3/8 (238)	2-1/8 (53)	4-3/8 (111)	20-1/8 (511)	16 (406)	11-3/4 (295)	3-1/2 (88)	1/2 (12)	1/4 (6)	10-1/8 (263)	-	-	35-7/8 (911)	20 (508)	
6	491	19A	10	22 (558)	22 (558)	18-3/4 (476)	10 (254)	1-1/8 (28)	7/8 (22)	33-5/16 (846)	10 (254)	9-3/8 (238)	2-1/2 (63)	6 (152)	22-5/8 (574)	18 (457)	12-1/8 (307)	4 (101)	5/8 (15)	5/16 (7)	12-5/8 (320)	-	-	39-1/4 (996)	22 (558)	1
8	491	14A	12	22 (558)	22 (558)	21-1/2 (546)	10 (254)	1-1/8 (28)	7/8 (22)	33-5/8 (854)	10 (254)	10-3/4 (273)	2-1/8 (53)	4-3/8 (111)	20-1/2 (520)	16 (406)	10-3/4 (273)	3-1/2 (88)	1/2 (12)	1/4 (6)	10-1/2 (266)	-	-	36-5/8 (930)	22 (558)	
8	491	18A	12	22 (558)	22 (558)	21-1/2 (546)	10 (254)	1-1/8 (28)	7/8 (22)	36 (914)	10 (254)	10-3/4 (273)	2-1/2 (63)	6 (152)	23-3/4 (603)	16 (406)	12-1/2 (317)	4 (101)	5/8 (15)	5/16 (7)	13-3/4 (349)	-	-	41-1/2 (1054)	22 (558)	
10	491	20	16	22 (558)	22 (558)	24 (609)	10 (254)	1-1/4 (31)	7/8 (22)	40-3/8 (1025)	10 (254)	13 (330)	2-3/4 (69)	6-1/2 (165)	25-9/16 (649)	23 (584)	14-1/4 (361)	5 (127)	5/8 (15)	5/16 (7)	15-9/16 (395)	-	1-3/4 (44)	44-9/16 (1131)	25 (635)	

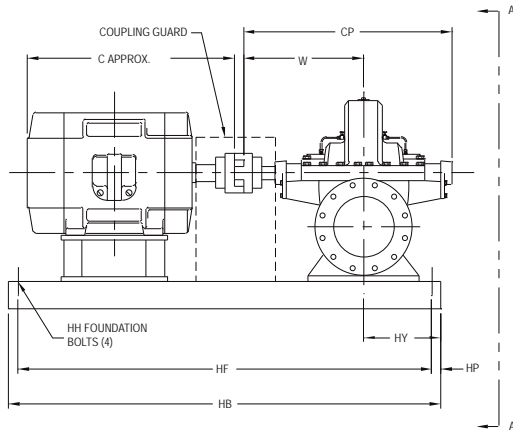
NOTES

- All dimensions are in inches. *STD. 125# SUCTION FLANGE, 250# DISCHARGE FLANGE FOR 6-491-12A AND 10-491-20
- Dimensions may vary ± 3/8".
- Not for construction purposes unless certified.
- Suction & discharge flanges ANSI Standard flat face.

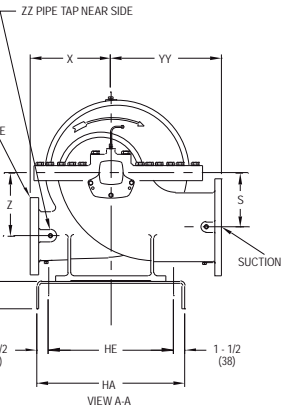
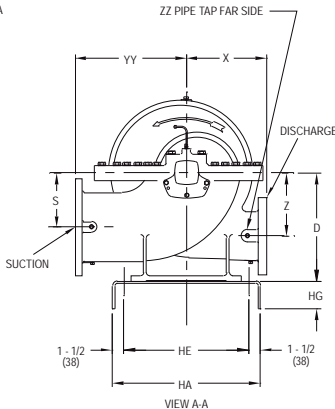
STD. 125# SUCTION AND DISCHARGE FLANGES*	OPT. 125# SUCTION FLANGE, 250# DISCHARGE FLANGE	OPT. 250# SUCTION AND DISCHARGE FLANGES
--	---	---

AURORA® MODEL 491 PUMPS

ON STANDARD STEEL BASE



RIGHT HAND ROTATION



LEFT HAND ROTATION

PUMP SIZE		STANDARD* 125# SUCTION AND DISCHARGE FLANGES		OPTIONAL 125# SUCTION FLANGE, 250# DISCHARGE FLANGE		OPTIONAL 250# SUCTION AND DISCHARGE FLANGES		MOTOR FRAME		C																																		
DISCH	MODEL	CASE BORE	SUCTION	D	S	W	X	Z	CP	HY	YY	ZZ	APPROX	254T (533)	256T (584)	284TS (558)	284T (609)	286TS (609)	286T (635)	324TS (635)	324T (660)	326TS (660)	326T (711)	364TS (736)	364T (711)	365TS (711)	365T (762)	404TS (838)	404T (812)	405TS (889)	405T (863)	444TS (965)	444T (914)	445TS (1016)	445T (1016)	447TS (1117)	447T (1143)	449TS (1143)	449T (1244)					
3	491	9A&C	5	12 (304)	6-1/8 (155)	14-5/8 (371)	11 (279)	6-1/8 (155)	25-15/16 (658)	10 (254)	12 (304)	3/4	BASE	11	11	11	12	12	12	12	12	12	12	12	12	12	12	-	-	-	-	-	-	-	-	-	-	-	-	-	-			
4	491	8A	6	11 (279)	5-3/4 (146)	14-5/8 (371)	10 (254)	5-1/2 (140)	25-15/16 (698)	8 (203)	11-1/4 (286)	3/4	BASE	11	11	11	11	11	11	12	12	12	12	12	12	12	12	-	-	-	-	-	-	-	-	-	-	-	-	-	-	-		
4	491	11A&C	6	13-3/4 (349)	6-7/8 (174)	16-5/8 (422)	11-1/4 (285)	7-1/8 (180)	29-11/16 (754)	12 (254)	14 (355)	3/4	BASE	12	12	12	12	12	12	12	12	12	12	13A	13A	13A	13A	15	15	15	15	15	15	16	16	16	16	16	16	-	-	-	-	
4	491	14C	6	13-3/4 (349)	6-7/8 (174)	17-5/8 (447)	13 (330)	8-3/8 (212)	31-11/16 (804)	12 (304)	15-1/4 (387)	3/4	BASE	-	-	-	-	-	-	15	15	15	15	15	15	15	15	15	-	-	-	-	-	-	-	-	-	-	-	-	-	-		
5	491	14A	8	16-1/4 (412)	8-1/4 (209)	17-5/8 (447)	13-1/2 (342)	9-3/4 (247)	31-11/16 (804)	12 (304)	17-1/4 (438)	1	BASE	-	-	-	-	15	15	15	15	15	15	15	15	15	15	15	16	16	16	16	16	16	16	16	16	16	16	-	-	-	-	
5	491	18A	8	16-1/4 (412)	8-1/8 (206)	18-7/8 (479)	15 (381)	10-5/8 (269)	33-3/8 (847)	12 (304)	18-3/4 (476)	1	BASE	-	-	-	-	-	-	-	-	-	-	15	15	15	15	15	16	16	16	16	16	16	16	16	16	16	16	16	-	-	-	-
6	491	12A	6	13-3/4 (349)	6-7/8 (174)	16-5/8 (422)	20-1/2 (520)	7-1/8 (180)	29-11/16 (754)	10 (254)	14 (355)	1	BASE	12	12	12	12	12	12	12	12	12	12	12	12	12	13A	13A	13A	13A	15	15	15	15	16	16	16	16	-	-	-	-	-	
6	491	14A&C	10	18-3/4 (476)	9-3/8 (238)	20-1/8 (511)	13-1/4 (336)	10 (254)	35-7/8 (911)	12 (304)	18 (457)	1	BASE	-	15	15	15	15	15	15	15	15	15	15	15	16	16	16	16	16	16	16	16	16	16	16	16	16	-	-	-	-	-	
6	491	18C	10	18-3/4 (476)	9-3/8 (238)	20-1/8 (511)	16 (406)	11-3/4 (298)	35-7/8 (911)	13-1/2 (342)	20 (508)	1	BASE	-	-	-	21	21	21	21	21	21	21	21	21	21	21	21	21	21	21	21	21	21	21	21	21	21	21	21	21	21	21	21
6	491	19A	10	18-3/4 (476)	9-3/8 (238)	22-5/8 (574)	18 (457)	12-1/8 (307)	39-1/4 (996)	13-1/2 (342)	22 (558)	1	BASE	-	-	-	-	-	-	-	-	-	-	-	-	-	-	-	-	-	-	-	-	-	-	22	22	22	22	22	22	22	22	
8	491	14A	12	21-1/2 (546)	10-3/4 (273)	20-1/2 (520)	16 (406)	10-3/4 (273)	36-5/8 (930)	13-1/2 (342)	22 (558)	1	BASE	-	-	-	-	-	-	-	-	-	-	-	-	-	-	22	22	22	22	22	22	22	22	22	22	22	22	22	22	22	22	22
8	491	18A	12	21-1/2 (546)	10-3/4 (273)	23-3/4 (603)	16 (406)	12-1/2 (317)	41-1/2 (1054)	13-1/2 (342)	22 (558)	1	BASE	-	-	-	-	-	-	-	-	-	-	-	-	-	-	22	22	22	22	22	22	22	22	22	22	22	22	22	22	22	22	22
10	491	20	16	24 (609)	13 (330)	25-9/16 (649)	23 (584)	14-1/4 (361)	44-9/16 (1131)	15 (381)	25 (635)	1	BASE	-	-	-	-	-	-	-	-	-	-	-	-	-	-	-	-	-	-	-	-	-	-	-	-	23	23	23	23	24	24	

NOTES

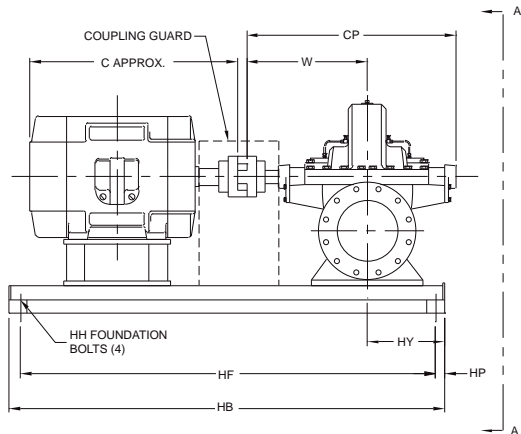
1. All dimensions are in inches.
2. Dimensions may vary ± 3/8".
3. Not for construction purposes unless certified.
4. Coupling gap may vary 1/8" thru 3".
5. Conduit box is shown in approximate location. Dimensions are not specified as they vary with each motor manufacturer.
6. Suction and discharge flanges are ANSI standard flat face.
7. Structural steel bases are used for pumps with motor frames larger than 449T (refer to factory).

*STD 125# SUCTION FLANGE AND 250# DISCHARGE FLANGE FOR 6-491-12A AND 10-491-20

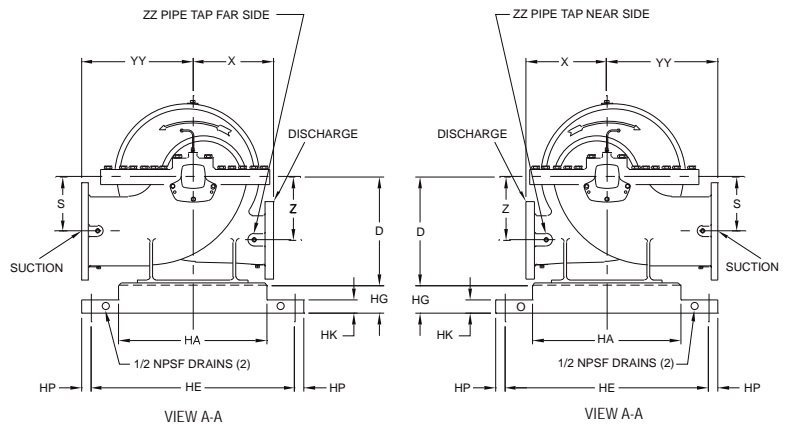
BASE	HA	HB	HE	HG	HH	HF	HP
11	18 (457)	48 (1219)	15 (381)	4 (101)	5/8 (15)	46 (1168)	1 (25)
12	18 (457)	54 (1371)	15 (381)	4 (101)	5/8 (15)	52 (1320)	1 (25)
13A	18 (457)	60 (1524)	15 (381)	4 (101)	5/8 (15)	58 (1473)	1 (25)
14A	18 (457)	65 (1651)	15 (381)	4 (101)	5/8 (15)	63 (1600)	1 (25)
15	22 (558)	60 (1524)	19 (482)	4 (101)	5/8 (15)	58 (1473)	1 (25)
16	22 (558)	72 (1828)	19 (482)	4 (101)	5/8 (15)	70 (1778)	1 (25)
21	24 (609)	66 (1676)	21 (533)	4 (101)	5/8 (15)	64 (1625)	1 (25)
22	24 (609)	78 (1981)	21 (533)	4 (101)	5/8 (15)	76 (1930)	1 (25)
23	26 (660)	84 (2133)	23 (584)	4-1/2 (114)	5/8 (15)	82 (2082)	1 (25)
24	26 (660)	96 (2438)	23 (584)	4-1/2 (114)	5/8 (15)	94 (2387)	1 (25)

AURORA® MODEL 491 PUMPS

ON STEEL DRIP RIM BASE



RIGHT HAND ROTATION



LEFT HAND ROTATION

PUMP SIZE		STANDARD* 125# SUCTION AND DISCHARGE FLANGES		OPTIONAL 125# SUCTION FLANGE, 250# DISCHARGE FLANGE		OPTIONAL 250# SUCTION AND DISCHARGE FLANGES		MOTOR FRAME																																												
DISCH	MODEL	CASE BORE	SUCTION	D	S	W	X	Z	CP	HY	YY	ZZ	C APPROX	254T (533)	256T (584)	267TS (558)	284T (609)	286TS (609)	286T (635)	324TS (635)	324T (660)	326TS (660)	326T (711)	364TS (736)	364T (736)	365TS (711)	365T (762)	404TS (762)	404T (838)	405TS (812)	405T (889)	444TS (863)	444T (965)	445TS (914)	445T (1016)	447TS (1016)	447T (1117)	449TS (1143)	449T (1244)													
3	491	9A&C	5	12 (304)	6-1/8 (155)	14-5/8 (371)	11 (279)	6-1/8 (155)	25-15/16 (658)	10 (254)	12 (304)	3/4	BASE	12	12	12	12	12	12	12	12	12	12	12	12	12	12	12	12	-	-	-	-	-	-	-	-	-	-	-	-	-	-	-	-							
4	491	8A	6	11 (279)	5-3/4 (146)	14-5/8 (371)	10 (254)	5-1/2 (140)	25-15/16 (658)	8 (203)	11-1/4 (286)	3/4	BASE	12	12	12	12	12	12	12	12	12	12	12	12	12	12	12	12	-	-	-	-	-	-	-	-	-	-	-	-	-	-	-	-	-	-					
4	491	11A&C	6	13-3/4 (349)	6-7/8 (174)	16-3/8 (415)	11-1/4 (285)	7-1/8 (180)	29-11/16 (754)	10 (254)	14 (355)	3/4	BASE	12	12	12	12	12	12	12	12	12	12	12	13	13	13	16	16	16	16	16	16	16	16	16	16	16	16	16	16	16	16	-	-	-	-	-				
4	491	14C	6	13-3/4 (349)	6-7/8 (174)	17-5/8 (447)	13 (330)	8-3/8 (212)	31-11/16 (804)	12 (304)	15-1/4 (387)	3/4	BASE	-	-	-	-	-	16	16	16	16	16	16	16	16	16	16	16	16	16	16	16	16	16	16	16	16	16	16	16	16	16	16	-	-	-	-	-			
5	491	14A	8	16-1/4 (412)	8-1/4 (209)	17-5/8 (447)	13-1/2 (342)	9-3/4 (247)	31-11/16 (804)	12 (304)	17-1/4 (438)	1	BASE	-	-	-	-	-	16	16	16	16	16	16	16	16	16	16	16	16	16	16	16	16	16	16	16	16	16	16	16	16	16	16	16	16	16	16	16	16		
5	491	18A	8	16-1/4 (412)	8-1/8 (206)	18-7/8 (479)	15 (381)	10-5/8 (269)	33-3/8 (847)	12 (304)	18-3/4 (476)	1	BASE	-	-	-	-	-	-	-	-	-	-	-	16	16	16	16	16	16	16	16	16	16	16	16	16	16	16	16	16	16	16	16	16	16	16	16	16	16	16	
6	491	12A	6	13-3/4 (349)	6-7/8 (174)	16-5/8 (422)	20-1/2 (520)	7-1/8 (180)	29-11/16 (754)	10 (254)	14 (355)	1	BASE	12	12	12	12	12	12	12	12	12	12	12	12	13	13	13	13	16	16	16	16	16	16	16	16	16	16	16	16	16	16	16	16	16	16	16	16	16	16	16
6	491	14A&C	10	18-3/4 (476)	9-3/8 (238)	20-1/8 (511)	13-1/4 (336)	10 (254)	35-7/8 (911)	12 (304)	18 (457)	1	BASE	-	16	16	16	16	16	16	16	16	16	16	16	17	17	17	17	17	17	17	17	17	17	17	17	17	17	17	17	17	17	17	17	17	17	17	17	17	17	
6	491	18C	10	18-3/4 (476)	9-3/8 (238)	20-1/8 (511)	16 (406)	11-3/4 (298)	35-7/8 (911)	13-1/2 (343)	20 (508)	1	BASE	-	-	-	-	21	21	21	21	21	21	21	21	21	21	21	21	21	21	21	21	21	21	21	21	21	21	21	21	21	21	21	21	21	21	21	21	21	21	21
6	491	19A	10	18-3/4 (476)	9-3/8 (238)	22-5/8 (574)	18 (457)	12-1/8 (307)	39-1/4 (996)	13-1/2 (342)	22 (558)	1	BASE	-	-	-	-	-	-	-	-	-	-	-	-	-	-	-	-	-	-	-	-	-	-	-	-	-	-	-	-	-	-	-	-	-	-	-	-	-		
8	491	14A	12	21-1/2 (546)	10-3/4 (273)	20-1/2 (520)	16 (406)	10-3/4 (273)	36-5/8 (930)	13-1/2 (342)	22 (558)	1	BASE	-	-	-	-	-	-	-	-	-	-	-	-	-	21	21	21	21	21	21	21	21	21	21	21	21	21	21	21	21	21	21	21	21	21	21	21	21	21	21
8	491	18A	12	21-1/2 (546)	10-3/4 (273)	23-3/4 (603)	16 (406)	12-1/2 (317)	41-1/2 (1054)	13-1/2 (342)	22 (558)	1	BASE	-	-	-	-	-	-	-	-	-	-	-	-	-	-	-	-	-	-	-	-	-	-	-	-	-	-	-	-	-	-	-	-	-	-	-	-	-		
10	491	20	16	24 (609)	13 (330)	25-9/16 (649)	23 (584)	14-1/4 (361)	44-9/16 (1131)	15 (381)	25 (635)	1	BASE	-	-	-	-	-	-	-	-	-	-	-	-	-	-	-	-	-	-	-	-	-	-	-	-	-	-	-	-	-	-	-	-	-	-	-	-	-		

*STD 125# SUCTION FLANGE AND 250# DISCHARGE FLANGE FOR 6-491-12A AND 10-491-20

NOTES

- All dimensions are in inches.
- Dimensions may vary ± 3/8".
- Not for construction purposes unless certified.
- Coupling gap may vary 1/8" thru 3".
- Conduit box is shown in approximate location. Dimensions are not specified as they vary with each motor manufacturer.
- Suction and discharge flanges are ANSI standard flat face.
- Structural steel bases are used for pumps with motor frames larger than 449T (refer to factory).

BASE	SIZE	HA	HB	HE	HF	HG	HH	HK	HP
12	18x54	18 (457)	54-1/2 (1384)	25-1/8 (638)	52-7/8 (1343)	4 (101)	3/4 (19)	2 (50)	13/16 (20)
13	18x64	18 (457)	64-1/2 (1638)	25-1/8 (638)	62-7/8 (1597)	4 (101)	3/4 (19)	2 (50)	13/16 (20)
16	22x64	22 (558)	64-1/2 (1638)	29-1/8 (739)	62-7/8 (1597)	4-1/2 (114)	3/4 (19)	2 (50)	13/16 (20)
17	22x74	22 (558)	74-1/2 (1892)	29-1/8 (739)	72-7/8 (1851)	4-1/2 (114)	3/4 (19)	2 (50)	13/16 (20)
20	26x90	26 (660)	90-1/2 (2298)	33-1/8 (841)	88-7/8 (2257)	4-1/2 (114)	3/4 (19)	2 (50)	13/16 (20)
21	26x72	26 (660)	72-1/2 (1841)	33-1/8 (841)	70-7/8 (1800)	4-1/2 (114)	3/4 (19)	2 (50)	13/16 (20)
23	26x84	26 (660)	84-1/2 (2146)	33-1/8 (841)	82-7/8 (2105)	4-1/2 (114)	3/4 (19)	2 (50)	13/16 (20)